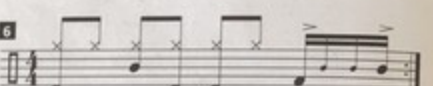
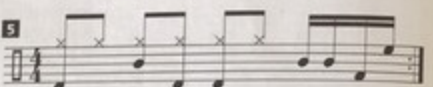
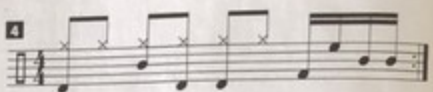
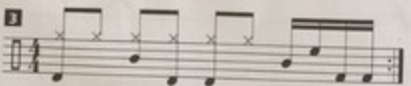
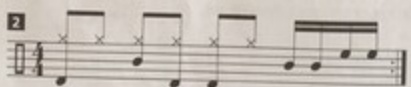
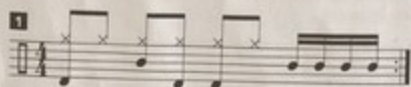
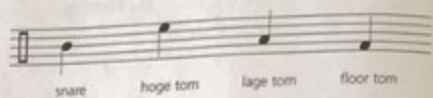
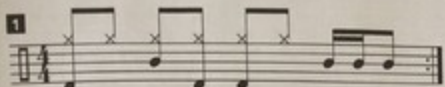


**A**


**B**

**1**



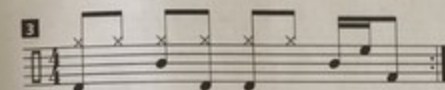
Musical notation for exercise 1, featuring a treble clef, a key signature of one flat, and a 4/4 time signature. The notation includes a series of eighth notes with 'x' marks above them, followed by a quarter note and a half note.

**2**

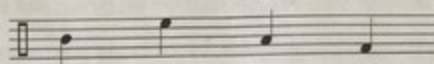


Musical notation for exercise 2, identical in notation to exercise 1.

**3**



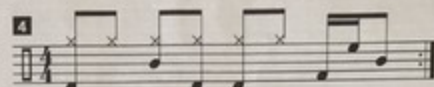
Musical notation for exercise 3, identical in notation to exercise 1.



snare      hoge tom      lage tom      floor tom

Musical notation for exercise 4, featuring a treble clef, a key signature of one flat, and a 4/4 time signature. The notation includes a series of eighth notes with 'x' marks above them, followed by a quarter note and a half note.

**4**




Musical notation for exercise 4, identical in notation to exercise 1.

**5**



Musical notation for exercise 5, identical in notation to exercise 1.

**6**



Musical notation for exercise 6, identical in notation to exercise 1.